

# Corporate Profile



Shobeshwar Road, Morbi – 363641



[info@sparkenterprise.in](mailto:info@sparkenterprise.in)



+91 91043 30034



<http://sparkenterprise.in>



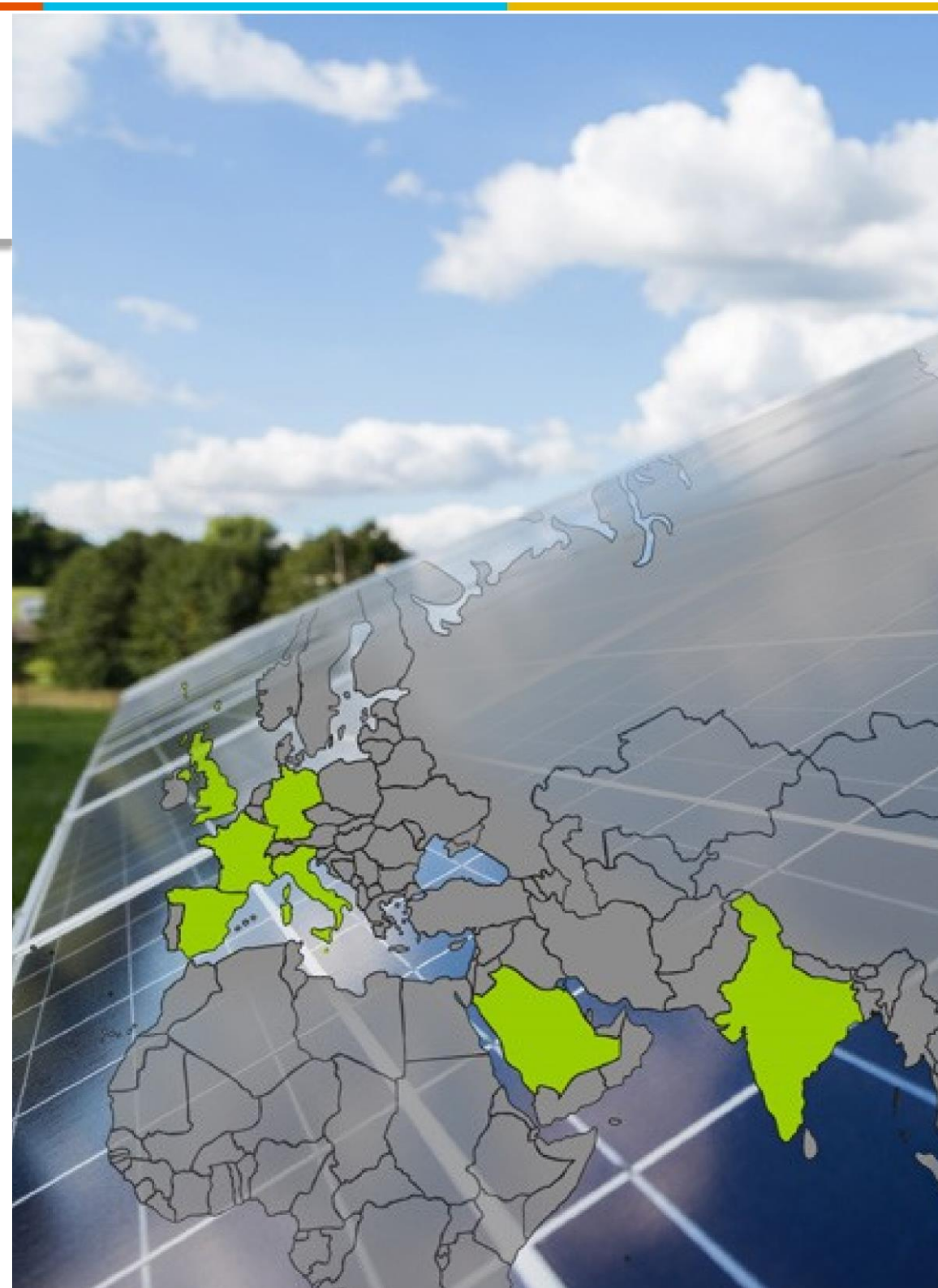
**SPARK**  
*Ignite New Innovation*

**SPARK ENTERPRISE**

SOLAR | LIGHTNING ARRERTER | EARTHING

# Presentation Contents

1. #TEAMSPARK	03
2. Vision, Mission & Commitment	04
3. Our Values	05
4. Spark Strength	06
5. Message from the Desk	07
6. Key Business Lines	
a. Solar Projects Designing and Analysis	08
b. Installation and Commissioning	09
c. Protections (Lightning Arrester & Earthing)	09
7. Contact us	10



# #TEAMSPARK

## Leadership with Trust and Delivering Values



Incorporated *in 2019.*



*3 Business Clusters, operation in more than 5 states*



*Turnover of 1 Million to 10 Million IndRupee from business all over India.*



*Team of more than 3 years of Solar field experience.*



*15+ In-house Employees and 50+ In/Out workers across the Cities.*



*Drives Customers focus and Strategic partnership.*



*Delivered more than 30MW+ designs and Analysis for all types of Solar Projects*



*Operates across 3 business verticals in Solar Projects designing & analysis, I & C work and Protections.*

# Aspiring to be a Global Leader

| Clear Vision, Mission and Commitment to Sustainability

---

**Vision** To be a responsible leader in providing Clean Energy Solutions for Sustaining Earth Healthier.

**Mission** With the Moto GO GREEN, to be India's leading Renewable Energy Solution Company providing the most innovative clean Energy solutions to our Clients with maintaining Highest Standards of Quality, Safety and Environmental Sustainability with also keeping efficiency of Project in Priority. To foster a culture of trust, collaboration and performance to achieve our business goals and be an employer of Choice.

**Commitment to Sustainability** Committed to leading a change in the country's current energy portfolio by delivering cleaner and smarter energy choices and thereby reducing India's carbon footprint. The company creates value through reliable and efficient generation of non-conventional power through innovation in solar power solutions.

# Maintaining Our Values

Trust, Ethics, Innovation, Integrity, Involvement, Unity & Responsibility



Trust *is the Bedrock of our existence.*



Ethics *governs all our actions.*



Innovation *is our daily inspiration.*



Integrity *We be fair, honest, transparent and ethical in our conduct; everything we do must stand the test of public scrutiny.*



Involvement *is way we pursue our organisational goals.*



Unity *We invest in our people and partners, enable continuous learning and building caring and collaborative relationships based on trust and mutual respect.*



Responsibility *We Integrate environmental and social principles in our business, ensuring that what comes from the people goes back to people many times over.*

# SPARK Strength

| Designing Team, Engineering Team, Onsite Developers



Dhaval Shingadiya  
Design Engineer



Tirthrajsinh Parmar  
Design Engineer



Rohit Prajapati  
Design Engineer



Rishi Badrakiya  
Sr. Project Engineer



Dharmesh Teraiya  
OnSite Engineer



Darpan Sagpariya  
IT Engineer

# MESSAGE FROM OUR FOUNDER

— **PARTH SHINGALA**  
SPARK ENTERPRISE

“With the motto “Go\_Green”, started serving the better ideas and design to the traditional method of Solar Project that leadsto better efficiency & generation that to at lower cost. Company with an Excellent team and Engineered Mind power has the capability to overcome hurdles on the ways with most innovative way.”



# Key Business Lines

Services covered Under #spark

With very skilful team, we cover almost all the part of India in the field of Designing & analysis for solar project, it may be Residential, Industrial or Commercial, we play an important role for Solar Projects. After conformation of the project, we do planning that includes primary Designing and Basic PvSyst Analysis then on finalizing the basic drawings, main designs are developed with different analysis as follows:

## Designing Includes

- ✓ Single Line Diagram
- ✓ PVML (Array Layout)
- ✓ System Protection layout
- ✓ Equipment layout
- ✓ Keyplan
- ✓ AC/DC Cable Sizing & Cable Path
- ✓ Cable Layout for minimum cabling with String Calculation
- ✓ Structure/Fabrication Drawing
- ✓ Complete BOM

## Analysis Includes:

- ✓ PvSyst Report
- ✓ Stadd Pro Report
- ✓ Shadow Analysis
- ✓ AC/DC Cable Sizing and Voltage Drop Calculation



## Installation and Commissioning:

Installation, Commissioning and Testing of PV Grid Connected Solar Power Plant, complete with material Handling, roof top readiness & making of Civil pedestals, Erection of module mounting structures, Mounting of PV Modules, Interconnection of PV modules, laying of cable & Wiring through conduit pipe/GI pipe from PV Array to DCDB, DCDB to Inverter, Inverter to AC Distribution Board, AC Distribution Board to Metering Panel, Metering Panel to the existing panel/Distribution board.

## Protection:

Earthing and Lightning Arrester is the most required protective equipment for the stable long term run of the solar project. Spark suggest the most effective LA that can be used for the protection of the site to cover the site area. Proper Earthing is must for proper working of the sensitive part of the component for operation. Spark brought an enormous way for proper Earthing protection. From clamping to earth ground, complete work is performed by #teampark.

# Contact Us

Happy to hear from you and advance thanks for joining with us



**SPARK ENTERPRISE**

*Ignite New innovation*

[www.sparkenterprise.in](http://www.sparkenterprise.in)



+91 9104330034



[info@sparkenterprise.in](mailto:info@sparkenterprise.in)



[fb.com/teamsparkenterprise](https://fb.com/teamsparkenterprise)



[@teamsparkenterprise](https://@teamsparkenterprise)



Spark Enterprise

Let's get Hands Together for Better Tomorrow